



Ai.LinkTo™

User Guide

Doc. Id	AL_001	Author	Rose Ann Lecciones		
Version No.	1.0	Version Date	02.08.2019	Version Status	Final

Statement of confidentiality: The information contained in this document is proprietary to Somark Group Ltd (Somark). This document is provided by Somark with the understanding it will be held in the strictest confidence and will not be disclosed or duplicated in whole or in part.

Contents

Document History	3
Document Conventions	4
1. Introduction	5
1.1 About the Product.....	5
1.2 Download and Installation	5
1.2.1 Downloading the Setup File	5
1.2.2 Installation of the Setup File	5
1.3 Configure Ai.LinkTo and Ai.Read.....	6
1.3.1 Ai.Read Device Preparation	6
1.3.2 Ai.LinkTo Software Overview	9
1.3.3 Configure Ai.LinkTo	10
1.3.3.1 Settings.....	10
1.3.3.2 Device Details.....	11
1.3.3.3 Black list	12
1.3.3.4 Ai.LinkTo version	12
1.3.3.5 Help	12
2. Scanning Tags.....	13
2.1 Scan and Display	13
2.2 Scan and Copy.....	14
2.3 Scan and Transfer.....	14
3. Blacklisting Tags	17
4. Running Ai.LinkTo in background.....	19
5. Troubleshooting.....	20

Document History

Date	Version	Description
02 August 2019	1.0	Published version

Document Conventions

The document uses the conventions described on the table for easier reference.

Important

The **Important** symbol indicates prerequisite checks and important information.

Note

The **Note** symbol indicates supplementary explanations and useful tips.

Caution

The **Caution** symbol indicates critical notices and restrictions.

Texts in **bold** indicates a screen within the application.

1. Introduction

1.1 About the Product

The Ai.LinkTo software allows you to use the Ai.Read™ device to display and capture a Somark Digitail™ tag's TID (Tag ID code) which is unique for each Digitail tag.

Ai.LinkTo allows users to display, capture and transfer the tag's TID from the animal tagged on to their device screen or to an application based on the cursor position or click of the mouse pointer.

1.2 Download and Installation

Note

Version 1.0 of the Ai.LinkTo program requires Windows 10 to be installed. If you are running an earlier version of Windows, please contact Somark for further assistance if installation is required, as we can help you update your current version of Windows to support Ai.LinkTo.

1.2.1 Downloading the Setup File

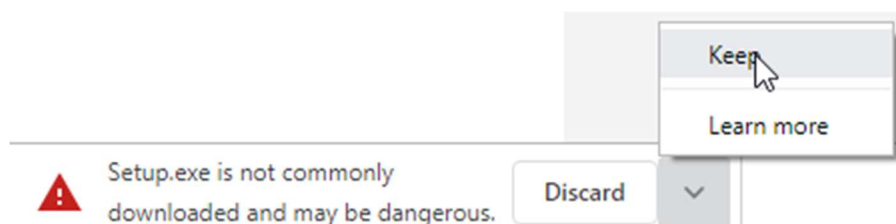
The Ai.LinkTo setup file is accessible from this [link](#).

Note

Some web browsers have built-in security measures which prevents downloading of executable files to your storage. However, this is a concern only for downloads from an untrusted or deceptive site.

The initial builds of the setup file are distributed via URL. The full link is <https://somarktestingsoftware.blob.core.windows.net/ai-link-to> to assure you that the installation file comes from an official distribution channel.

Depending on your web browser, you may need to manually approve the setup file from the provided URL. For example, when you encounter a similar security prompt below, click the drop-down arrow beside the Discard button and choose to “Keep”.



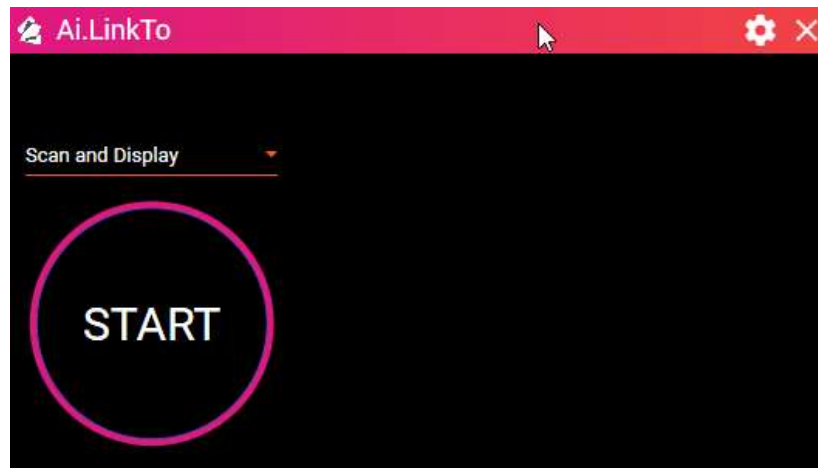
1.2.2 Installation of the Setup File

After you have successfully downloaded the setup file, it is now time to install the Ai.LinkTo application.

Step 1. Run the setup file

Step 2. Setup will extract the necessary files and install Ai.LinkTo on to your system

Step 3. When setup is complete, the Ai.LinkTo application will run

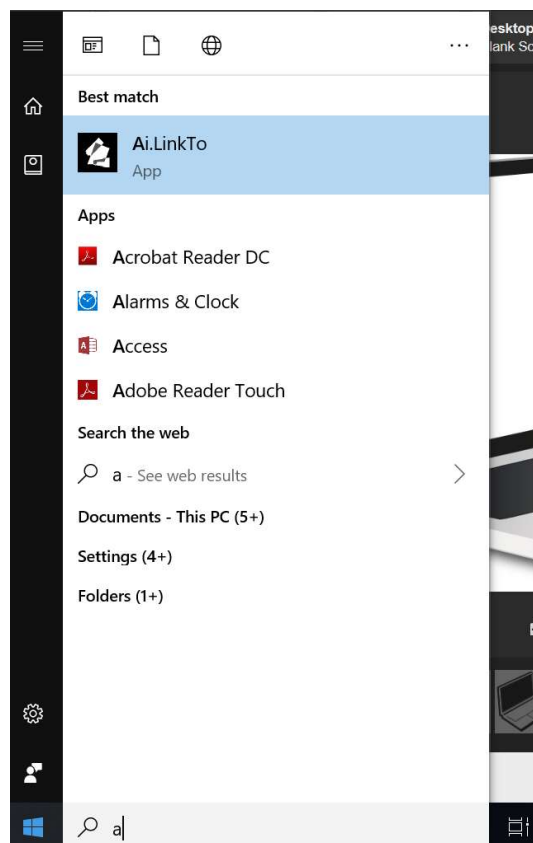


1.3 Configure Ai.LinkTo and Ai.Read

1.3.1 Ai.Read Device Preparation

Configuring the Ai.Read device to work with the Ai.LinkTo software is quick and simple.

Step 1. Run the Ai.LinkTo application by starting the application from the Windows Start Menu



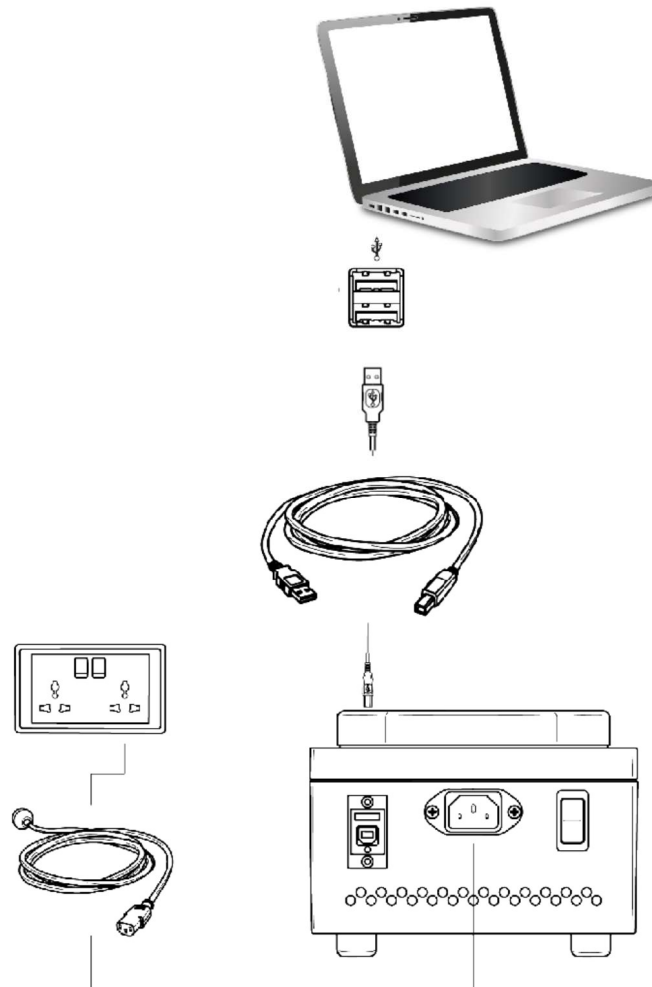
Step 2. Connect the power cord of the Ai.Read device to a power supply

Step 3. Connect the USB A to USB B cable to an available USB port to the computer

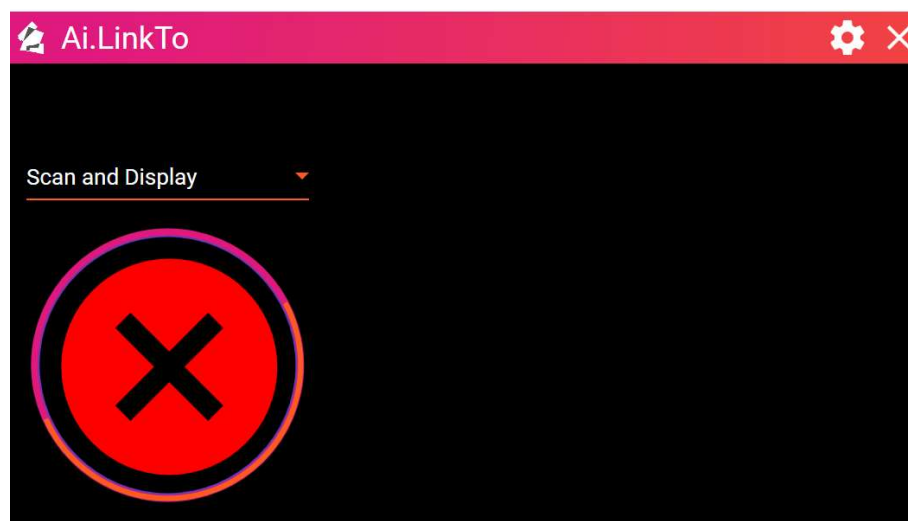
Step 4. Turn on the Ai.Read device using the power button located at the rear of the device

Step 5. The Ai.Read device is detected and configured automatically.

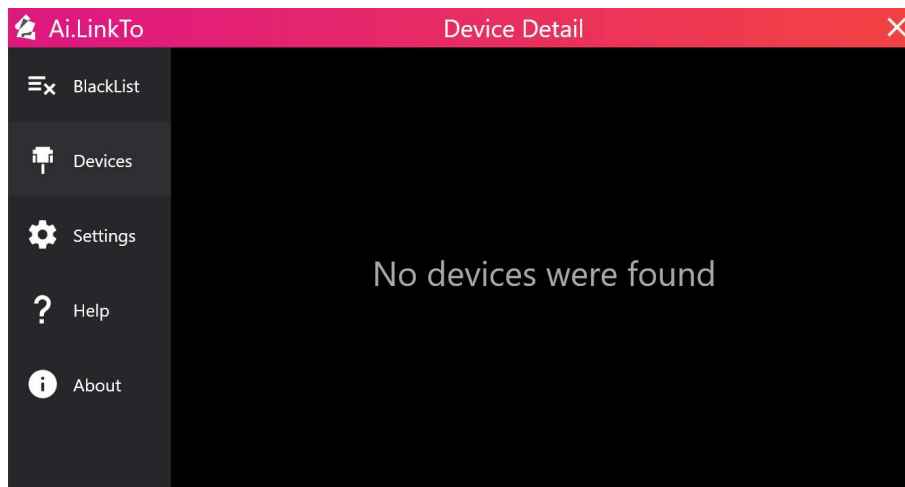
Step 2 – 5: Refer to the diagram below to connect the Ai.Read device to your computer.



If the Ai.Read device is not detected or is not connected, Ai.LinkTo will display a Red Cross when the Start Button is clicked.

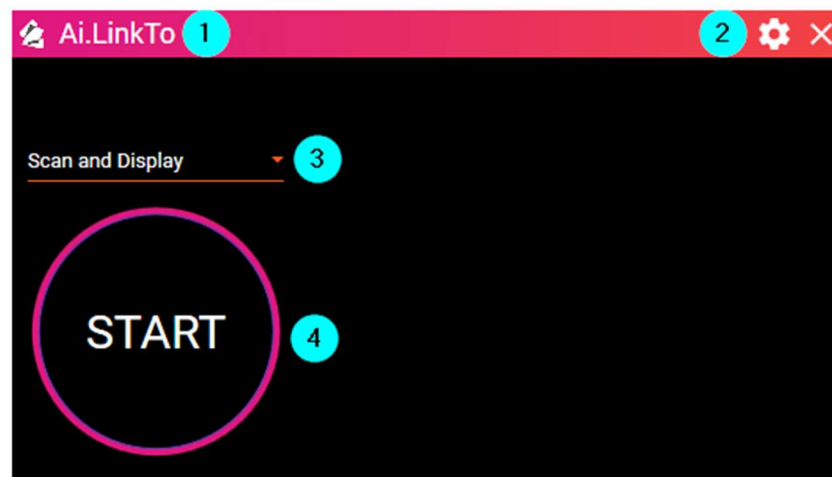


When the Ai.Read device is not detected or is not connected, Ai.LinkTo will display No devices were found in the Settings: Device Details area.



1.3.2 Ai.LinkTo Software Overview

Below is an overview of the various elements that make up the Ai.LinkTo software interface.



The Home Screen elements are as follows:

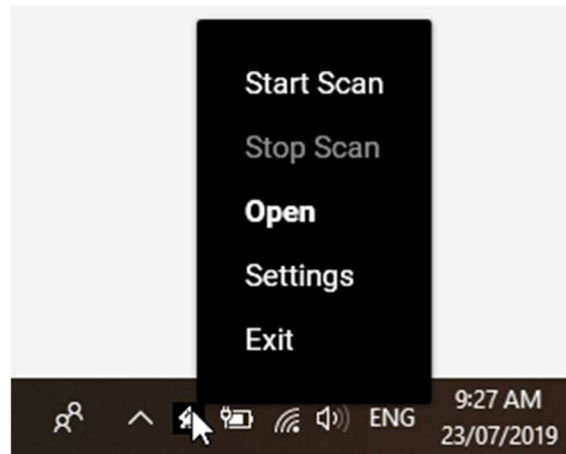
1. Screen title
2. Settings Button
3. Action Selector
4. Start button

	Settings button – access the application configuration options
<div> <div>Scan and Display</div> <div>Scan and Copy</div> <div>Scan and Transfer</div> </div>	Action Selector – select an action to be performed on the successful scan of a Digitail Tag. <ol style="list-style-type: none"> 1. Scan and Display – only displays the scanned tag on the screen 2. Scan and Copy – displays and copies the scanned tag top the clipboard 3. Scan and Transfer – displays, copies and pastes the scanned tag to an active field/window
	Start button – Activate the Ai.Read to start scanning for Digitail tags

1.3.3 Configure Ai.LinkTo

You can access the configuration options by either:

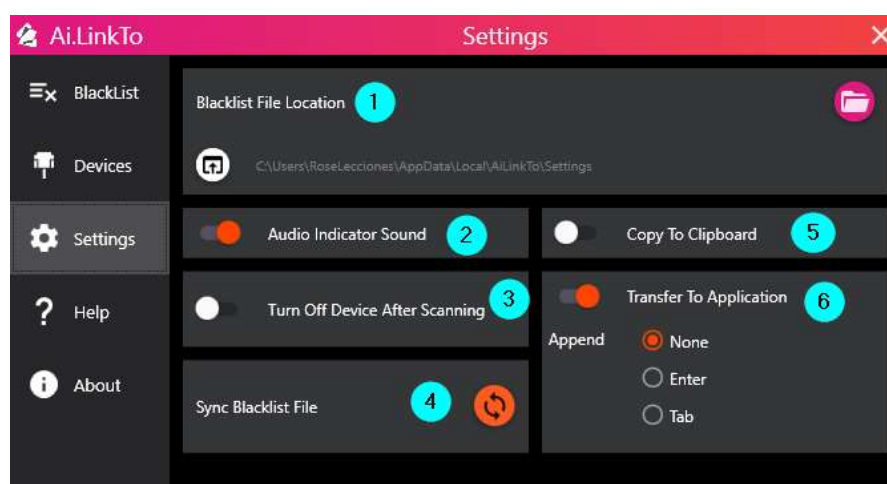
- using the Setting Button on the top-right corner of the Scan Screen
- using a mouse right click on the Ai.LinkTo icon (which can be found in the bottom of your computer screen in the “tray menu”) and selecting Settings



Note

If you do not see the Ai.LinkTo icon in your menu as shown above, it may be present in the list accessed via the ^ button – as shown next to the arrow cursor above.

1.3.3.1 Settings



The Settings menu shows the following elements:

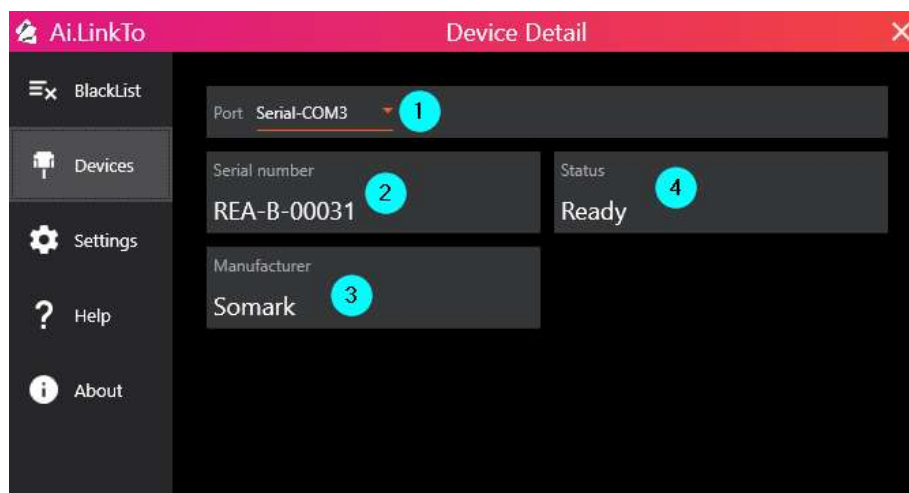
1. Blacklist File Location – The path where the file blacklist.csv is saved. A blacklist file contains the tags that the user wants to be blacklisted/not read.
2. Audio Sound Indicator – When this setting is on, the application will play a beep sound to indicate that a tag has been scanned.
3. Turn Off Device After Scanning – When this setting is on, the application will stop Ai.Read from actively waiting for a tag to be scanned. User needs to click the Start button again to scan a new tag.
4. Sync Blacklist File
5. Copy to Clipboard – When this setting is on, the user does not need to click the copy to clipboard button after scanning a tag because the tag will be copied automatically to the clipboard.
6. Transfer to Application – When this setting is on, the application will copy then paste the scanned tag to any active field.
 - a. Append None – There will be no space between all the scanned tags
 - b. Append Enter – There will be a new line to separate all the scanned tags
 - c. Append Tab – There will be a tab space to separate all the scanned tags

1.3.3.2 Device Details

Select the **Devices** menu to view details of the connected Ai.Read.

Device details include the following :

1. Port where the device is connected.
2. Serial number of the device
3. Manufacturer
4. Status – Busy if the device is currently running, Ready if the devices is connected but not running



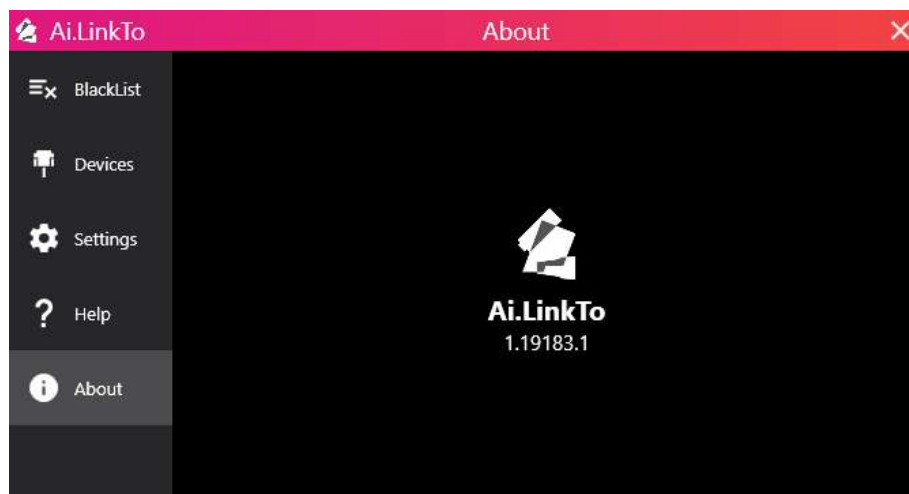
1.3.3.3 Black list

Select **Blacklist** from the menu to blacklist tags and stop the Ai.LinkTo from scanning and displaying a specified Tag. All blacklisted tags are maintained in a blacklist file.

The blacklist file is a comma separated file (or CSV) that contains the scanned tag and the name of the user currently logged in to the computer. Any tags in the blacklist file will not be scanned in the main Ai.LinkTo screen.

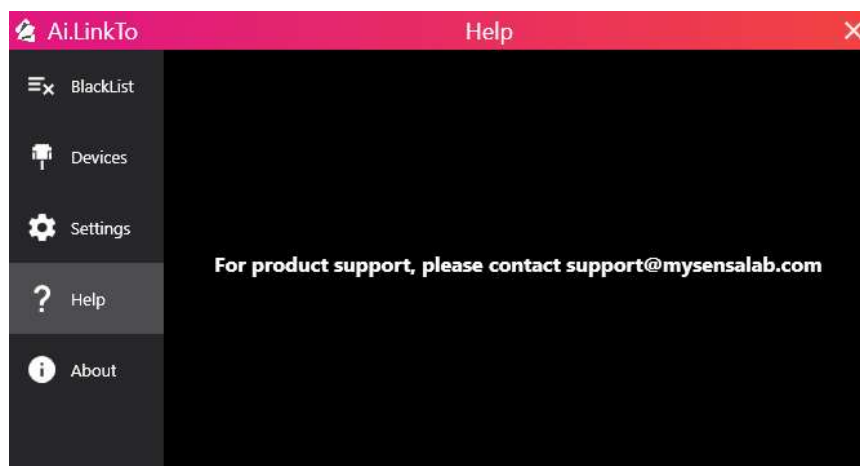
1.3.3.4 Ai.LinkTo version

Select the **About** menu item to display the version details of Ai.LinkTo which may be required for troubleshooting purposes.



1.3.3.5 Help

Select the **Help** menu item to access the contact information for product and technical support.



2. Scanning Tags

Ai.LinkTo allows you to Scan and Display or Scan and Capture the scanned Digitail Tag TID code (Tag ID code) which is unique for each Digitail tag.

2.1 Scan and Display

Use the Scan and Display to display the Digitail Tag TID on the Ai.LinkTo screen on a successful scan. Once scanned the user can manually copy and paste the TID code of the scanned to an application.


To scan and display a tag, do the following:

Step 1: Select “Scan and Display” from the action selector.

Step 2: Click the “Start” button.

Step 3: Scan a tag on the Ai.Read. Once the tag has been scanned, the tag detail will be displayed on the screen.



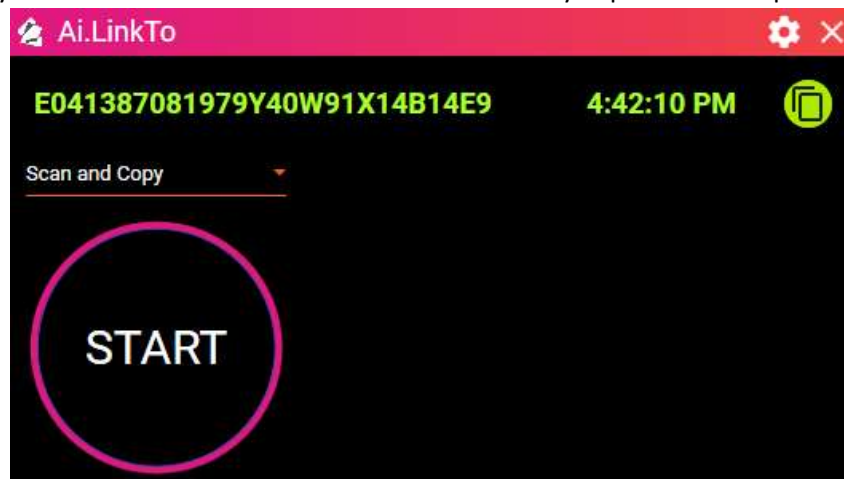
Step 4: To copy the TID click the copy to clipboard button 

2.2 Scan and Copy

Use the Scan and Copy action to scan an animal Digitail TID code and copy it automatically to the clipboard in a single action. The scanned tag will still be displayed on the screen as well.

To scan and copy a tag, do the following:

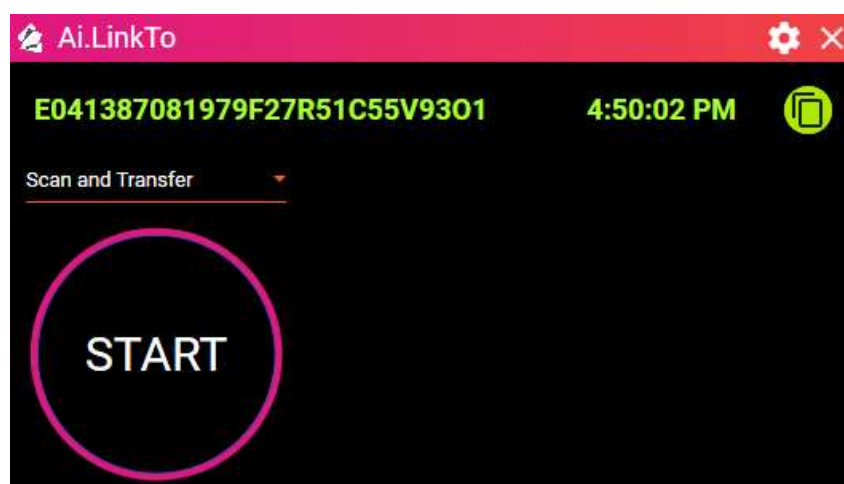
- Step 1: Select “Scan and Copy” from the action selector.
- Step 2: Click the “Start” button.
- Step 3: Scan a tag on the Ai.Read. Once the tag has been scanned, the tag detail will be displayed on the screen and the detail is automatically copied to the clipboard.



2.3 Scan and Transfer

Use the Scan and Transfer action to scan an animal Digitail Tag TID and paste it into an application field where the cursor has been focused.

Use the Settings options to define how the tag is to be separated which may be either on a new line, using a tab space or with no separator between values.



To scan and copy a tag, do the following:

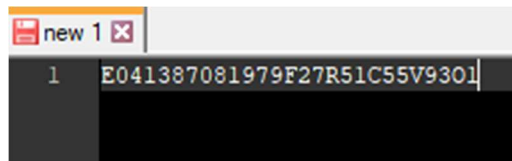
- Step 1: Select “Scan and Transfer” from the action selector.
- Step 2: Click the “Start” button.

Step 3: Scan a tag on the Ai.Read. Once the tag has been scanned, the tag detail will be displayed on the screen and the detail is automatically copied to the clipboard and pasted on the field where the cursor is focused.

Important

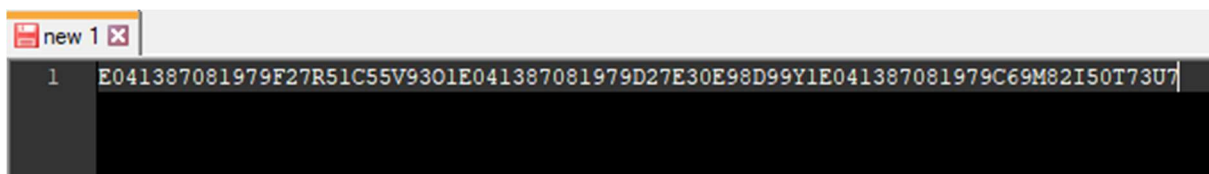
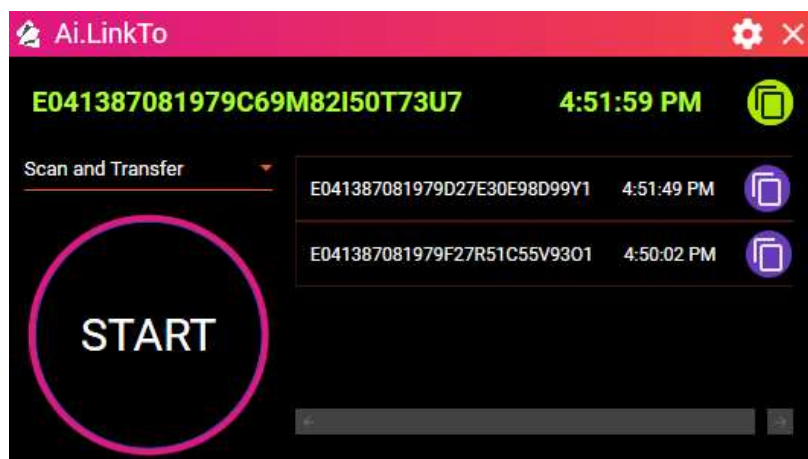
The cursor should be focused on an enabled text field for the transfer to work.

Example: The tag detail as transferred to an active Notepad application.

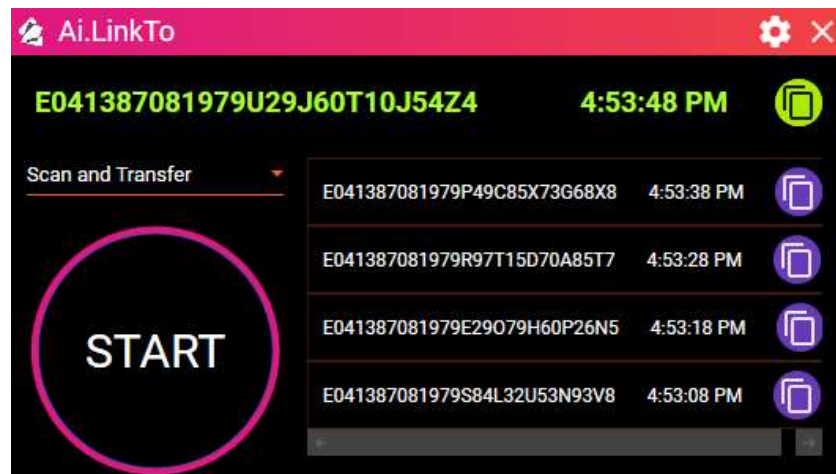


Depending on the transfer setting, multiple tags will be separated differently.

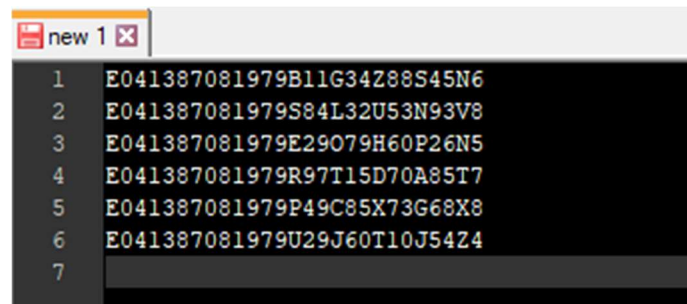
Tag Separator: None



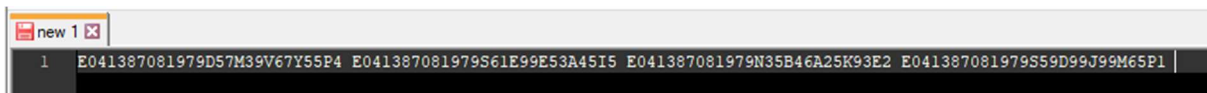
Tag Separator: ENTER



The tags as transferred to an active Notepad application, separated by a new line.



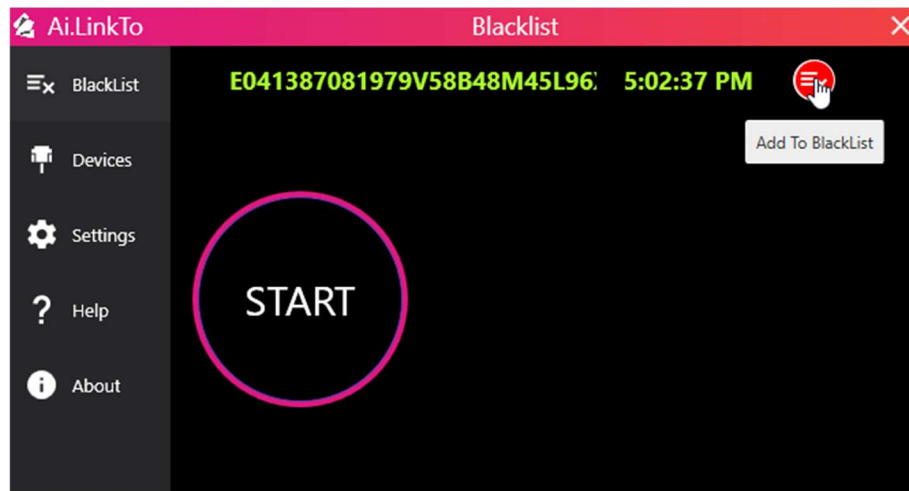
The tags as transferred to an active Notepad application, separated by tab.



3. Blacklisting Tags

Users can blacklist a Digital Tag which will stop Ai.LinkTo from scanning the Tag in future. The scanned tag is added to a blacklist file.

To configure and select the blacklist file location access the Blacklist Settings from the Settings options.



To blacklist a tag:

Step 1: Open the Settings screen.

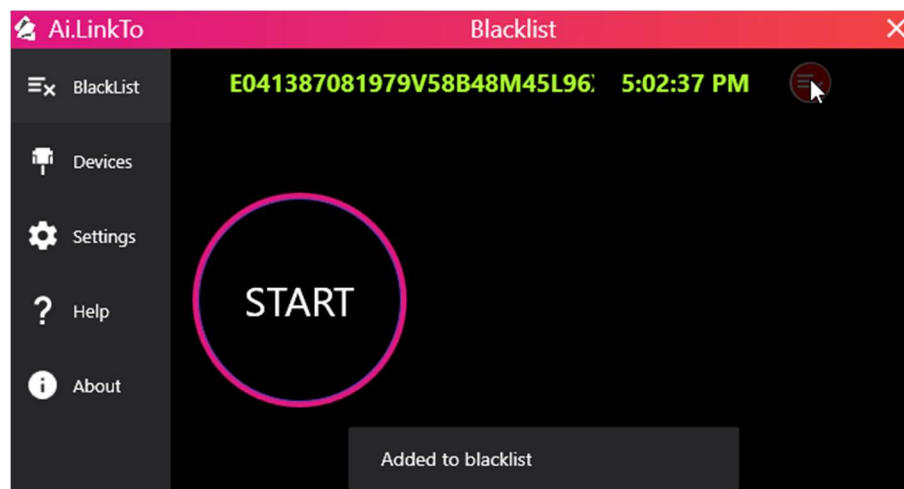
Step 2: Go to Blacklist tab.

Step 3: Click the Start button.

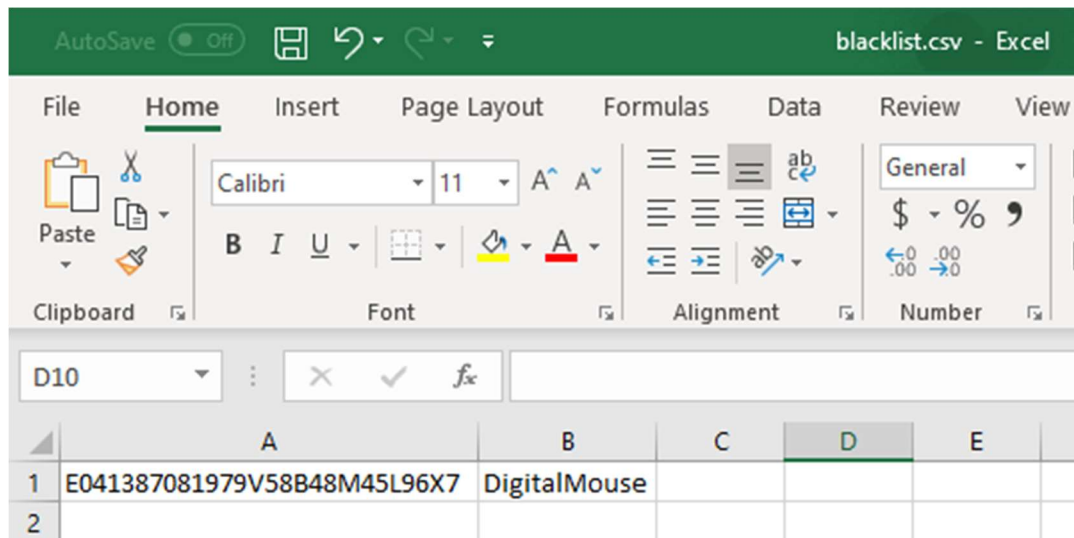
Step 4: Scan a tag on the Ai.Read. Once the tag has been scanned, the tag detail will be displayed on the screen.

Step 5: Click the Add to Blacklist button to add the tag to the blacklist file.

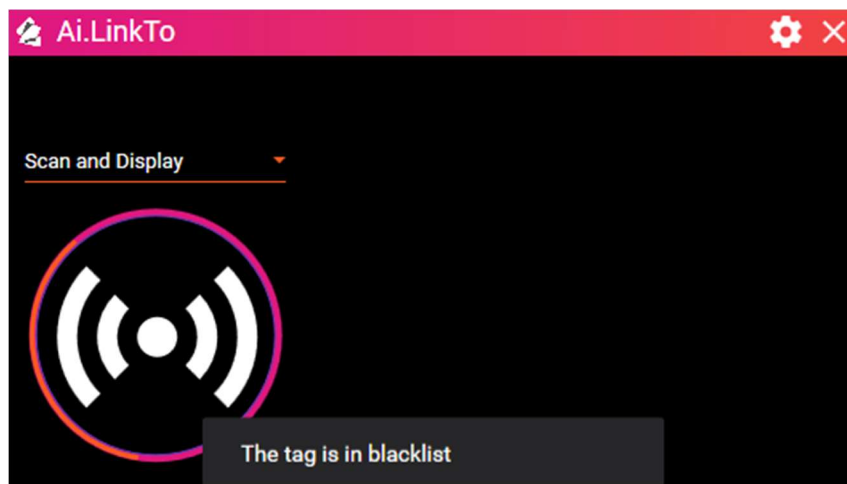
Users will be notified when the tag has been added to the blacklist file.



Blacklist file:

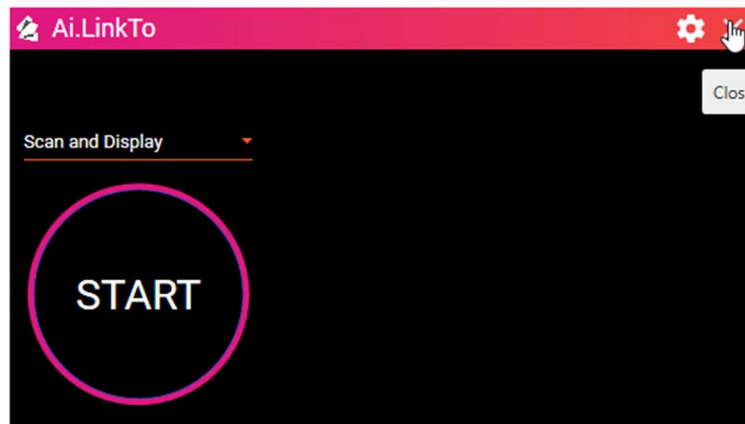


When user tries to scan the blacklisted file, the following message will be displayed.



4. Running Ai.LinkTo in background

When you close Ai.LinkTo, it will continue to work in the background so you can continue to scan tags.



Users can set **Turn Off Device After Scanning to OFF** to allow multiple scans to be completed until the Scanning is manually turned off.

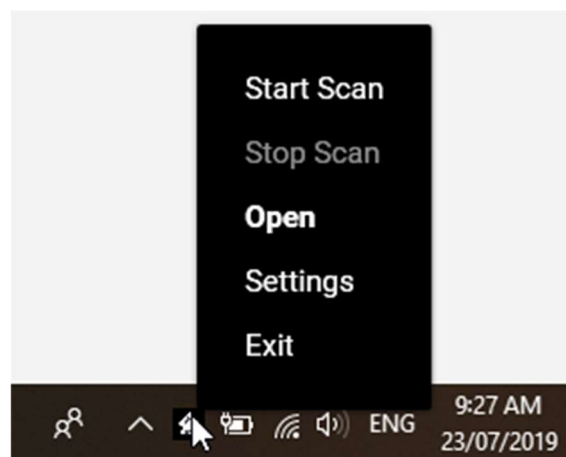
The Ai.LinkTo icon will turn green to indicate the Ai.Read is active.



If Ai.Read is not active, the icon will turn white.



Right-clicking the icon will give you the following options:



1. Start Scan – activates the Ai.Read. This is disabled when Ai.Read is already active.
2. Stop Scan – deactivates the Ai.Read. This is disabled when Ai.Read is already inactive.
3. Open – opens the main screen.
4. Settings – opens the setting screen.
5. Exit – exits the application. Selecting this will end the application and will no longer run in the background.

5. Troubleshooting

SYMPTOM	POSSIBLE CAUSE	ACTIONS
Ai.Read is not displayed in the Devices List	The Ai.Read device may not be connected to the computer.	Check that the USB cable which connects the Ai.Read to the computer is securely connected to the USB ports on the Ai.Read and the computer.
	The Ai.Read device driver is not loaded.	When you first connect Ai.Read to your computer, your system may need to download the Ai.Read device driver, if it is not already present. This may take 1-2 minutes to download and install. If the device driver is not installed, the Ai.Read device will not be found.
	<p>The Ai.Read may not be powered up or turned-on.</p> <p>👉 Important Ai.Read does not receive power from the computer. It must be plugged into a power outlet.</p>	<p>Ensure that the Ai.Read power cable is securely connected to the Ai.Read and plugged into a power outlet.</p> <p>Ensure that the Ai.Read has been turned on using the power button located on the rear side of the device. The LED indicator will flash (illuminate) once when the device has been turned on.</p> <p><i>The LED indicator will remain on once the first scan is completed by a user.</i></p>
	The USB cable may be faulty.	Contact customer support at support@mysensalab.com to order a replacement cable.
Ai.Read is powered on and connected with status "Ready" but the tags are not being scanned.	<p>The Ai.Read may not have been started.</p> <p>👉 Important The Ai.LinkTo icon is shown in color green when Ai.Read is actively scanning.</p>	<p>Ensure that the Start button has been clicked in the main screen or started by right-clicking the tray icon then selecting Start Scan.</p> <p>The Ai.Read device LED indicator will remain on once the first scan is completed by a user.</p>
I started the Ai.Read in Ai.LinkTo but it suddenly stopped scanning.	<p>The Ai.Read may not have been used for a period of more than 30 seconds.</p> <p>👉 Important Ai.LinkTo will automatically stop the Ai.Read from scanning if left idle for more than 30 seconds to</p>	If the Ai.Read has been left idle for more than 30 seconds, simply start the scanning again using the main screen or by right-clicking the tray icon then selecting Start Scan.

SYMPTOM	POSSIBLE CAUSE	ACTIONS
	prevent the device from overheating.	
	The Ai.Read may have been configured to stop scanning after every tag.	If you want to scan continuously without having to start the Ai.Read every time, ensure that the “Turn Off Device After Scanning” is set to OFF in Settings screen.
I accidentally added a tag to the blacklist file and I want to be able to scan it again.		Check the Settings screen to see where the blacklist file is located. Open the file in a text editor or Excel and delete the tag that you accidentally blacklisted. Save the file and click “Sync Blacklist File” in Setting.
I selected “Scan and Transfer” but the tags are not being transferred to my application.	The cursor may not be focused on the field where you want the tag to be transferred.	Ensure that the cursor is active on the field where you want to transfer the tag.